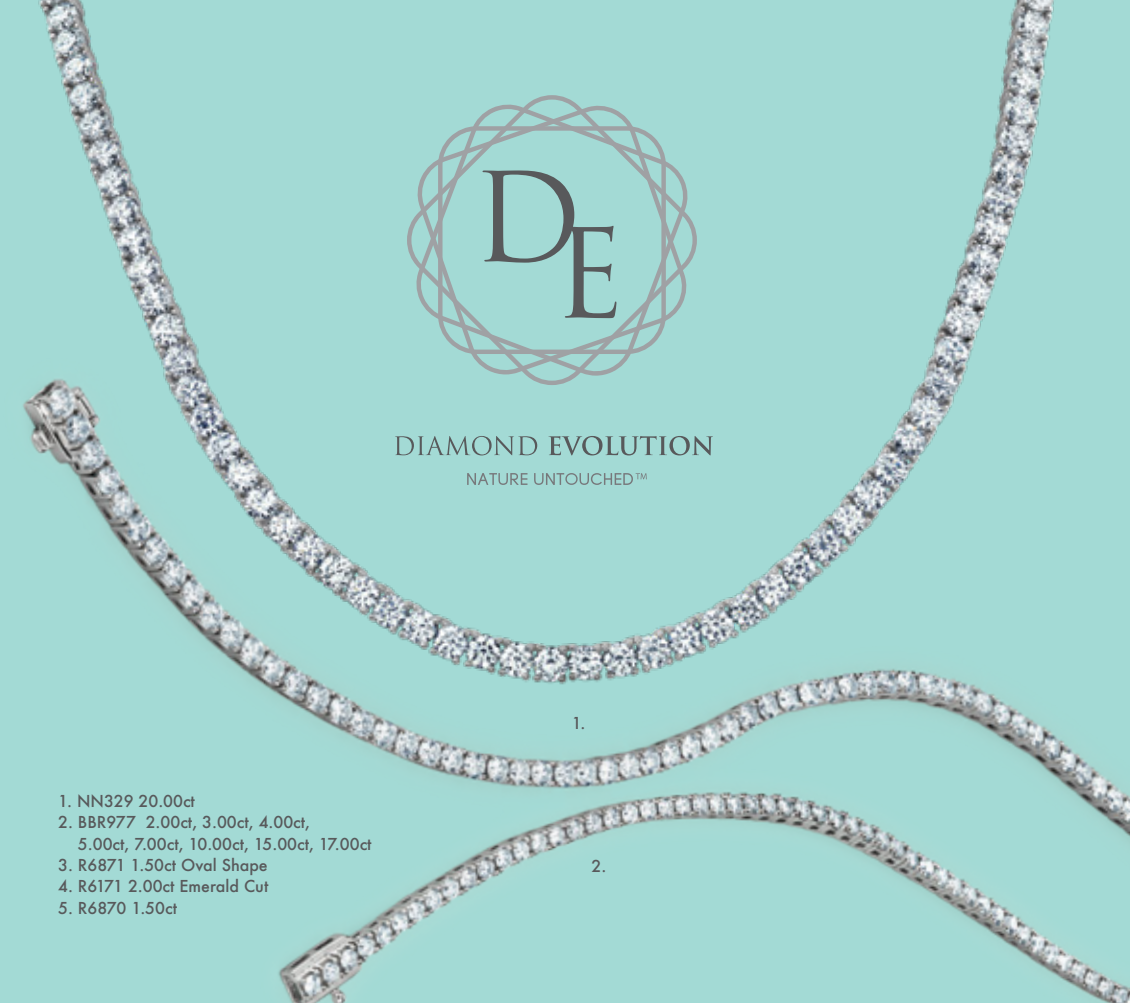




1. PP4245 0.50ct, 1.00ct 2. PP4336 0.50ct, 0.70ct, 1.00ct, 1.50ct, 2.00ct 3. NN324 1.00ct, 1.50ct 4. NN326 1.00ct, 1.50ct
 5. PP4252 1.00ct, 1.50ct 6. PP4328 0.50ct, 0.70ct, 1.00ct, 1.50ct 7. EE4252 2.00ct 8. EE2083 1.50ct, 2.00ct, 3.00ct
 9. EE4336 0.20ct, 0.30ct, 0.40ct, 0.50ct, 0.75ct, 1.00ct, 1.50ct, 2.00ct, 3.00ct 10. EE4245 2.00ct
 11. EE4328 1.00ct, 2.00ct 12. EE4484 1.00ct 13. EE4330 1.00ct, 1.50ct, 2.00ct, 3.00ct



1. NN329 20.00ct
 2. BBR977 2.00ct, 3.00ct, 4.00ct, 5.00ct, 7.00ct, 10.00ct, 15.00ct, 17.00ct
 3. R6871 1.50ct Oval Shape
 4. R6171 2.00ct Emerald Cut
 5. R6870 1.50ct



3. EE4252 2.00ct 4. EE4245 2.00ct 5. EE4328 1.00ct, 2.00ct
 ALL PRODUCT CAN BE ORDERED IN VARIOUS GOLD KARATS AND COLOURS OR PLATINUM.
 ct. weight refers to the total weight of diamonds. All jewellery is enlarged to show detail.
 Jeweller is not responsible for any typographical errors. © Copyright Corona Jewellery March 2022.



DIAMOND EVOLUTION
 NATURE UNTOUCHED™



DIAMOND EVOLUTION
 NATURE UNTOUCHED™



DIAMOND EVOLUTION
 NATURE UNTOUCHED™

Diamond Evolution Lab Grown Diamonds are grown in state-of-the-art laboratories which replicate the Earth's natural forces and conditions required for a diamond to grow. The process begins with a diamond seed, a carbon atom which when activated, stimulates the diamond to grow. When complete, the result is a brilliant lab grown diamond with the same physical, chemical and optical properties as a natural diamond. Like a natural diamond, lab grown diamonds are evaluated using the 4C's—cut, clarity, colour and carat. However, we believe that Diamond Evolution Lab Grown Diamonds allow for a **5th C-choice!** This choice allows you to determine what best suits your budget while demonstrating your sense of self.

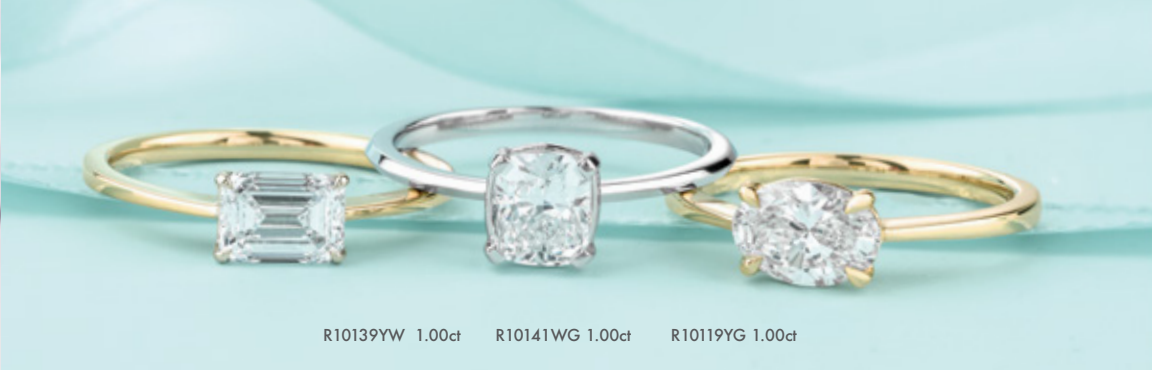
We are committed to the replenishment of Canada's Forests. In partnership with One Tree Planted, five trees will be planted with the purchase of any piece from the **Diamond Evolution Collection.** This initiative is indicative of our desire to contribute to the reduction of carbon emissions.



R31137WG 0.70ct, 0.90ct, 1.20ct, 1.70ct, 2.20ct
R31137WDWG Wedding Band



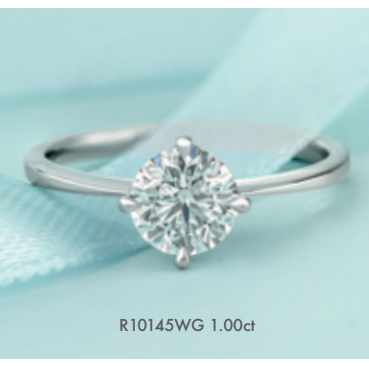
R31150WG 1.20ct, 1.50ct, 2.00ct, 2.50ct



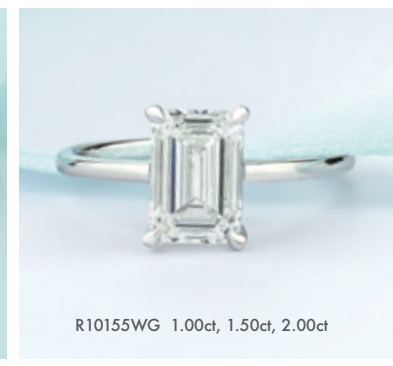
R10139YW 1.00ct R10141WG 1.00ct R10119YG 1.00ct



R31154WG 1.20ct, 1.70ct
R31137WDWG Wedding Band



R10145WG 1.00ct



R10155WG 1.00ct, 1.50ct, 2.00ct



R10164YW 0.50ct, 0.70, 1.00ct, 1.50ct



1. R10149WG 1.50ct 2. R10143WG 1.00ct 3. R10159YW 1.00ct 4. R10163YW 1.00ct



R31165WG 0.84ct, 1.35ct, 1.85ct, 2.40ct
R31160WDWG Wedding Band
R31168WG 1.35ct, 1.85ct, 2.40ct



R31163WG 0.84ct, 1.35ct, 1.85ct, 2.40ct



1. R50M19WG 3.50ct
2. R50M20WG 2.50ct
3. R50M18WG 3.50ct



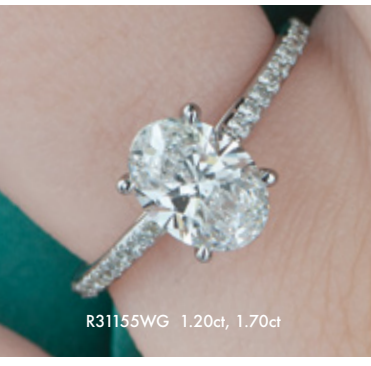
1. R50G74WG or YG 0.25ct, 0.50ct, 0.75ct, 1.00ct
2. R50J68YG 0.50ct, 0.75ct, 1.00ct, 1.50ct, 2.00ct
3. R50L96WG 0.50ct, 0.75ct, 1.00ct, 1.50ct, 2.00ct



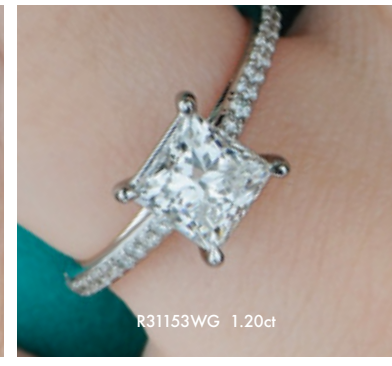
1. R50G74WG or YG 0.25ct, 0.50ct, 0.75ct, 1.00ct
2. R50J68YG 0.50ct, 0.75ct, 1.00ct, 1.50ct, 2.00ct
3. R50L96WG 0.50ct, 0.75ct, 1.00ct, 1.50ct, 2.00ct



R31152WG 1.20ct, 1.70ct



R31155WG 1.20ct, 1.70ct



R31153WG 1.20ct



1. R10146WG 0.50ct, 1.00ct 2. R10165 0.70ct, 1.00ct
3. R10162YW 1.00ct 4. R10142WG 1.00ct, 1.50ct, 2.00ct



R10158 0.70ct, 1.00ct, 1.50ct



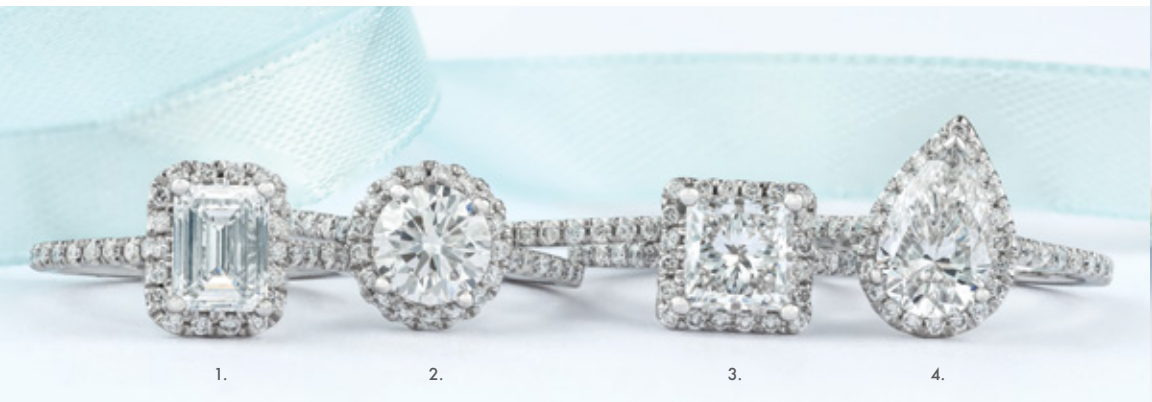
CLASSIC CATHEDRAL SOLITAIRE
R10156WG 1.00ct R10136WG 0.50ct, 0.75ct, 1.00ct, 1.50ct, 2.00ct, 3.00ct
R10157YW 1.00ct, 1.50ct, 2.00ct R10148WG 1.00ct, 1.50ct, 2.00ct



1. R10118WG 0.70ct, 1.00ct, 1.50ct, 2.00ct
2. R10140YW 1.00ct



R10144WG 1.00ct R10151RG 1.00ct



1. R31166WG 0.84ct, 1.35ct, 1.85ct, 2.40ct 2. R31160WG 0.84ct, 1.00ct, 1.35ct, 1.85ct, 2.35ct
3. R31162WG 1.35ct 4. R31164WG 0.85ct, 1.35ct, 1.85ct, 2.40ct



1. R31204WG 2.50ct
2. R31205YW 2.50ct



1. R31129YW 1.00ct, 1.50ct, 2.00ct, 3.00ct
2. R31140YW 1.00ct, 1.50ct



The jewellery in this catalogue is predominantly crafted with Canadian Certified Gold. Look for the Canadian Certified Gold insignia stamped on the product as well as the accompanying tag for your guarantee of Canadian origin.